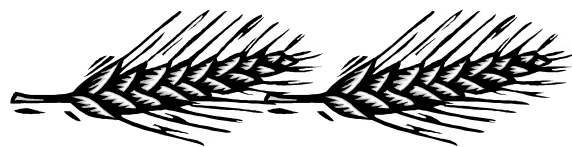
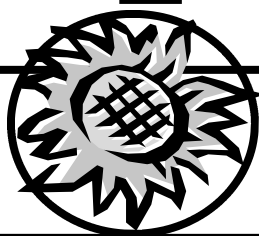
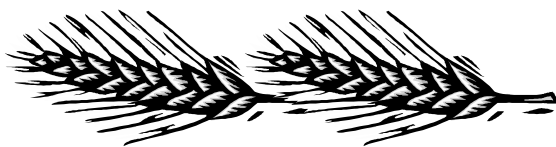


# LEAGUE OF WOMEN VOTERS OF SALINA, KANSAS INC.

# V O T E R



Vol. 48, Issue 3—April 2007  
Website: [www.lwvofsalinaks.com](http://www.lwvofsalinaks.com)

President, Gina McDonald  
[ginamcd@aol.com](mailto:ginamcd@aol.com)

Editor, Ann Zimmerman  
[ann@annzimmerman.com](mailto:ann@annzimmerman.com)

## BOARD OFFICERS

President: Gina McDonald  
Vice President: Carla Strand  
Secretary: Ann Zimmerman  
Treasurer: Donita Michaelsen

## BOARD MEMBERS

Budget:(co-chairs):  
Donita Michaelsen, Bill Powell  
Finance Drive / Socials:  
Emma Doherty, chair  
Legislative Action:

Mary Frances Hogg, chair  
Membership:

Mary Anne Powell, chair  
Observers:

Kaye Crawford (Off-board), chair  
Program/Lunch & Learn(co-ch.):

Jan Mendell

Marge Mintun (Off-board)  
Public Relations:

Bill Powell, chair  
Study:

Sid Gray, chair  
The Voter (co-chairs):

Mary Anne Powell  
Ted Mintun (Off-board)  
Ann Zimmerman, editor

Voter Service (co-chairs):  
Janice Norlin

Marge Mintun (Off-board)  
Website:

Ann Zimmerman, chair  
Other Board Members

Dina Giron

Jennifer Kay-Higgins

*The League of Women Voters is a non-partisan, nonprofit organization of women and men of every age, race, background and political belief. Through more than 1200 local Leagues, state Leagues and the national organization, League members work to promote citizen action on local, state, and national issues.*

## League of Women Voters annual meeting APRIL 21 HOW DO YOU GET YOUR NEWS?

People get their news and their ideas of the world through many routes. David Norlin will lead a discussion of how Salinans learn what's going on in the world and how those avenues can be improved. For the past couple of years, Norlin, League member and former college teacher, has focused his energy on promoting accuracy in media and trying to increase the availability of good information in Salina.

The discussion will be part of the Salina League of Women Voters Annual Meeting, which follows a noon lunch served family style at Martinelli's Little Italy Restaurant, Saturday, April 21. Lunch will be a salad, chicken fettuccini, pasta primavera and a drink, at a cost of \$12 per person.



All members are urged to attend. New officers and board members will be elected for the coming year. The brief business meeting will precede Norlin's presentation.

This is a chance to strengthen your bonds with fellow league members and promote the vitality of our important organization.

If you have not already made your reservations, please contact Mary Anne Powell at 823-8041 or [wbpowell@ksu.edu](mailto:wbpowell@ksu.edu).



## INSIDE THIS ISSUE:

President's Report, Calendar, Candidate Forum	PAGE 2
Proposed Mental Health Position	PAGE 3
Observers	PAGE 4
Observers (cont.)	PAGE 5
May Lunch & Learn, State Convention	PAGE 6
Writing Op/Eds, Consolidation Study	PAGE 7
Membership Form	PAGE 8

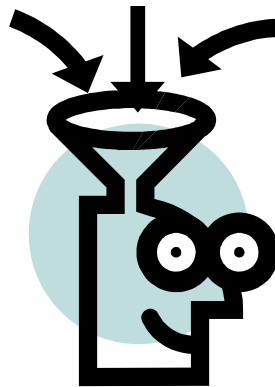
# PRESIDENT'S REPORT

The Salina League of Women Voters wishes to express our sincere appreciation and respect for the Salina city commission as they endeavor to collect information and listen to local citizens to determine if there can be any benefit to consolidating some, all or none of the activities of city and county governments.

They understood that the recommendations of the League study are not to consolidate, but to study the issue; to hear from citizens and to educate each other as to what options are available and the impact of those options.

As for the County, it is clear that they are opposed to gathering information. We've been told by all three County commissioners that they will not even investigate the possibilities.

All we wanted was to investigate, to gain knowledge. None of the arguments that we have heard or that have been written are the result of a consolidation inquiry. Consolidation has nothing to do with eminent domain. It has nothing to do with how far you park your car from the curb.



But it may mean faster, more equitable services. It could mean fewer taxes because we could eventually reduce duplication of services.

But for now, we'll never know, because the County Commission will not even contemplate the possibilities.

"A popular government without popular information, or the means of acquiring it, is but a prologue to a farce or a tragedy or perhaps both. Knowledge will forever govern ignorance, and a people who mean to be their own governors must arm themselves with the power which knowledge gives." - James Madison, 1822.

There will always be people who deny the reality of progress. Let's hope they are not always our leaders.

Thanks for the opportunity to serve as League President for the past two years. It was a pleasure.

—Gina McDonald

## CALENDAR



### APRIL

- 21 Annual Meeting
- 28 State Convention, Wichita

### MAY

- 15 Board Meeting

### JUNE

- 9-11 Nat'l Council, Wash. DC
- 19 Board Meeting

### JULY

- 17 Board Meeting

### AUGUST

- 21 Board Meeting
- tba Membership Meeting

## Report: March 28 Candidate Forum

Thoughtful answers and occasional flashes of humor were part of the March 28 Candidates Forum co-sponsored by the Salina League and the Salina Area Chamber of Commerce.

More than 100 people attended the 2½ hour forum that preceded the April 3 election. Six candidates vied for four seats on the USD 305 Board of Education: Phil Black, Carol Brandert, William Discipio, Karen Guy, Larry Michel and Mike Wilson. Six candidates competed for three positions on the Salina City Commission: Diana Dierks, Mary Douglass, Luci Larson, Aaron Peck, Abner Perney and Barb Shirley.

Moderators for the evening were Carla Strand, League vice president, and Dr. Mace Braxton, vice chair of the Chamber. The evening began with explanations of format and rules, followed by one-minute

opening remarks from candidates. Paper and pencils were available for the audience to submit questions which were collected and screened by League members Jan Mendell and Marge Minton. Questions also came from a media panel: Salina Journal Editor/Publisher Tom Bell, Radio Central General Manager Jerry Hinrikus and General Manager of the Salina Media Group Bob Protzman. League members Mary Anne Powell and Donita Michaelsen were timekeepers ensuring that no candidate's answers ran too long. After the questioning, each candidate gave a one-minute closing

Don Weiser of the Chamber made arrangements for the evening. David Hawksworth and volunteers for Community Access TV of Salina, taped the event which then aired several times before and on Election Day.

## LWVK's Proposed New MENTAL HEALTH POSITION

Over the past 30 years, and especially since the passage of the Mental Health Reform Act of 1991, Kansas has worked toward deinstitutionalization of people with serious mental illness, as state funding has been increasingly shifted from state hospitals to community mental health centers (CMHCs) and resources for independent living.

While integration of individuals into mainstream society is an admirable goal, service providers are failing to meet many significant needs. Community hospitals are closing inpatient psychiatric units, and the three remaining state hospitals are currently at or near capacity. The number of beds at state mental hospitals has decreased by 456 since 1991, while the state's population grew 10.6% between 1990 and 2005. Even persons admitted for psychiatric care in community hospitals are limited to stays of three to five days, with 45 days per year being the maximum paid by insurance companies.

Nationwide, individuals with serious mental illness experience high levels of unemployment, criminal incarceration and homelessness. In Kansas, the state continues to cut back on the safety net of totally state-funded programs which are the only hope some persons have for survival.

In 2005, the League of Women Voters of Kansas (LWVK) adopted a study of mental health care in Kansas to evaluate the significant shifting of care from state mental hospitals to community-based mental health centers. This study confirms that the inadequacy of the current system has contributed to an increase in the population of the homeless mentally ill, to the incarceration of adult and juvenile offenders with mental illness, to preventable deaths among individuals with mental illness, and to the inability of service providers both to deal appropriately with individuals in crisis and to treat the physical and mental problems of individuals with severe and persistent mental illness.

The following statement of position is

proposed for adoption by delegates at the State LWV Convention 2007 on April 28.



### STATEMENT OF POSITION

The LWVK endorses a mental health system which decreases dependence on costly emergency services, reduces poverty and homelessness among people with mental illness, reduces rates of incarceration, supports healthy recovery, and strengthens families.

To address the inadequacies found by this study, the LWVK recommends the following improvements in the existing continuum of care:

1. Services provided along this continuum should be based on consumers' needs.
2. The number of hospitals with psychiatric units and the overall number of beds for acute psychiatric care must keep pace with needs statewide.
3. Stable funding should be ensured for providers in the public mental health care system.
4. CMHCs should provide services that are more accessible and available by:
  - a. allowing multiple points of entry,
  - b. increasing preventive and early intervention services to the general and target populations,
  - c. strengthening crisis intervention,
  - d. collaborating with other agencies,
  - e. using technology creatively, and
  - f. offering treatments which demonstrate a measurable outcome.
5. A seamless transition must be provided

for the consumer from primary care in CMHCs to intermediate care in state-operated regional inpatient units, and on to more acute care in State Mental Health Hospitals that also function as centers of excellence for research and education.

To fund these programs, the League recommends that Kansas should:

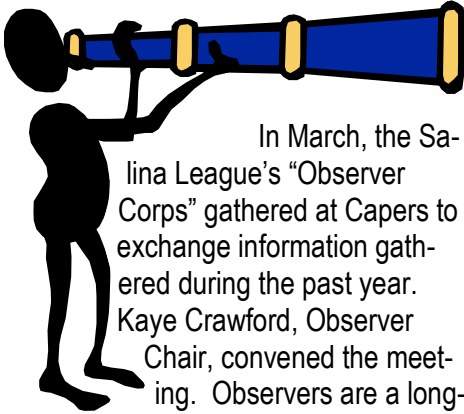
1. maximize use of state and federal dollars,
2. implement full insurance parity for mental health care,
3. distribute funds in a manner that more directly links money with services provided,
4. develop new and innovative sources of revenue from both public and private sectors, and
5. develop a public awareness campaign to educate citizens about the critical needs of the mentally ill and the obligation of all citizens to respond.

To improve mental health care services, consumers must have:

1. a wide range of transitional and long-term housing options, from fully structured to fully independent,
2. wrap-around services including physical health care, dual-diagnosis treatment, geriatric treatment and employment/education assistance.
3. an outreach program for individuals experiencing homelessness and individuals resistant to treatment,
4. effective crisis intervention,
5. humane and quality mental health policies/services within law enforcement and justice systems, and
6. quality mental health services offered in correctional systems at every level.

Finally, the League supports the goals and recommendations of the President's New Freedom Commission on Mental Health (*New Freedom Commission on Mental Health, Achieving the Promise: Transforming Mental Health Care in America. Final Report.* DHHS Pub. No. SMA-03-3832. Rockville, MD: 2003.)

## OBSERVERS GATHER TO EXCHANGE REPORTS



In March, the Salina League's "Observer Corps" gathered at Capers to exchange information gathered during the past year. Kaye Crawford, Observer Chair, convened the meeting. Observers are a long-standing League of Women Voters tradition across the country. Local League members volunteer to sit in on regular public meetings—in Salina that includes groups such as city commission, airport authority, Community Corrections, Central Kansas Mental Health Center, school board, library board, health department, solid waste task force, and city planning commission. The job of the observer is simply to observe, not to comment or act.

The act of observing reminds the organizations that they work not only on their own behalf, but on behalf of the citizens and with citizens' money.

Observers this year included: Emma Doherty (health dept. and solid waste), LaVelle Frick (planning commission), Bill Powell (airport authority), Jan Mendell & Marge Mintun (mental health), Ted Mintun (community corrections) and Mike Wilson (school board and library board).

The following reports come from our local Observers.

### **COMMUNITY CORRECTIONS**

*(Observer: Ted Mintun)*

#### **MOVING TOWARD "EVIDENCE BASED PRACTICES" IN CORRECTIONS**

**INTRODUCTION:** In its effort to improve the success rate among the offenders under its supervision, Community Corrections, Inc. (CCI), has re-

ceived training and has begun to implement what is known as "Evidence Based Practices in Corrections." It is one of the first community corrections agencies in the state to do so.

**WHY CHANGE?** CCI has the same problems as other Corrections agencies: increased caseloads, decreasing budgets, increased recidivism, less accountability while legislatures and policy makers demand positive outcomes.

Evidence based practices in corrections has learned what does and does not work in corrections during the past 15 years. They claim that they can improve outcomes and recidivism, reduce victimization, enhance collaboration, establish research based decision making and target funding toward interventions that bring the greatest returns.

Once the agency had the training, they have begun to change the way they work with offenders to conform to evidence based practices in corrections.

**HOW TO GET THE BIGGEST BANG FOR THE BUCK:** Evidence based practices in corrections divides the offenders into three groups:

**Low risk:** Provide the least restrictive sanctions and supervision and do not invest much time or money in working with them.

**Extremely high risk:** Don't waste a lot of time with them but simply control the risk of them re-offending while with CCI.

**Moderate high risk:** Work very closely with this group, through assessment, determining the criminogenic needs and reducing risk factors through effective intervention and appropriate supervision.

By doing this, we don't waste time

and resources working closely with those who don't need help or can't be helped. The idea is to put agency's efforts and resources on the moderately high risk offenders where the most good can be done.

### **BASIC TENETS OF EVIDENCE**

**BASED PRACTICES:** Everything is based on accurate assessments which are based on risk which is the likelihood of re-offending and need of the client for turning his or her life around.

A basic tenet is called motivational interviewing in which every contact between CCI staff and offender is an opportunity for some type of cognitive therapy and positive re-enforcement where this can be done honestly.

**IN SUMMARY:** For evidence based practice to work, the entire staff has to be on board and working according to the same basic principles. Right now agency administrators and supervisors are listening to interviews between staff and offenders, then giving staff immediate feedback about how productive their interview was with the client.

It is a slow process which started last summer but it seems that everyone is now on board and working together to increase the successes of the clientele. The Director Annie Grevas is leading the effort to use this plan of working with offenders in order to increase the successes among the offenders under the supervision of CCI.

### **SALINA PLANNING COMMISSION**

*(Observer: La Velle Frick)*

Since the flap about the downtown bars has quieted a bit, there wasn't much excitement during Planning Commission meetings since last year, ex-

*(Continued on page 5)*

## OBSERVERS, continued

*(Continued from page 4)*

cept maybe the conversion of Shalamar Nursing Home to apartments. The neighbors were pretty certain about what they absolutely would not allow, and their very vocal opposition at the meetings brought about needed compromise. This is the way things like this are supposed to work, and sometimes they actually do.

The downtown parking problem may involve the Planning Commission after the imported parking lot expert gets through with his analysis. We don't know how extensive the proposed changes will be.

The new comprehensive plan we hear the city is working on which would rearrange the area from South Fourth Street to South Ohio Street and East Crawford to East Iron Street probably will involve the Planning Commission in some way, at least I hope so. If it is as intensive as I have heard, it will be really interesting. Maybe a final solution can be worked out about the Kenwood Park/Oakdale Park ownership so the Expo Center could be located there, and maybe there would be room to build a new larger swimming pool where the old swimming pool is presently located. We have heard about maybe landscaping the river and making hiking and biking trails and paved walkways from the parks to downtown, much like San Antonio, Texas' famous Riverwalk but on a smaller scale. It doesn't look to me like there is enough room for some of the quaint little riverside restaurants and coffee shops, but maybe the plan could clean up a very unsightly mess with the way the river in that area looks today.

Sounds like there could be some interesting observing of the Planning Commission to be done in the future so I will keep you posted.

Thank you for allowing me to be your observer.

### **SALINA AIRPORT AUTHORITY**

*(Observer: Bill Powell)*

#### **SLN AVIATION SERVICE CENTER**

The results of the strategic plan adopted and implemented by the Salina Airport Authority along with other local entities during the past 11 months are striking. The year 2005 ended with just 11 leads for aviation-related businesses. As of December 2, 2006, the staffs of the SAA, city, county and Chamber are working a total of 64 leads and prospects.

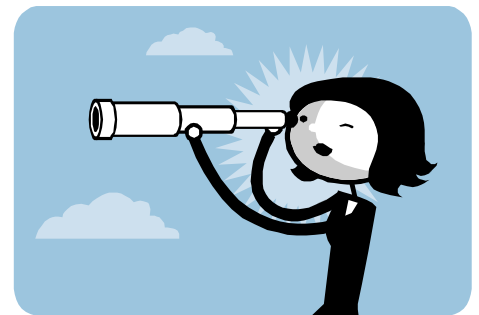
It wasn't long ago that the SLN Municipal Airport was positioned in the world's spotlight by the world-record setting flights of Steve Fossett and the Virgin Atlantic GlobalFlyer. Fossett piloted the GlobalFlyer from Salina on February 28, 2005. When he returned on March 3, 2005—67 hours later—he had become the first person to fly an airplane nonstop, solo, around the world without refueling. On February 8, 2006, Fossett piloted the GlobalFlyer on a nonstop, non-refueling distance record, landing on February 11, 2006 in Bournemouth, England. His third record-breaking flight took place on March 14, 2006, in a closed-course distance record that took over 74 hours. He landed in Salina on March 14, 2006. Last June, the GlobalFlyer was flown to Washington, DC, to be displayed at the Smithsonian Institute's National Air and Space Museum's Steven F. Udvar-Hazy Center for aircraft.

The GlobalFlyer helped us realize what could be accomplished at the Salina Municipal Airport and Airport Industrial Center for the benefit of Salina and Saline County. With this thought in mind, the Salina Airport Authority and Salina Area Chamber of Commerce set

out to see what they could do to increase aviation facilities and employment. They studied what resources and capabilities we had that would benefit Salina and Saline County. This led to a strategic plan that had four main activities:

1. Identify aviation businesses that the Salina area could support.
2. Hire a recruiter.
3. Hire a communications/media person.
4. Decide what portion of the Municipal Airport and Industrial Center we could develop.

The most significant results are in the number of new jobs gained during



the year. As of December 31, 2005, the Salina Aviation Service Center jobs totaled 552. The total aviation/aerospace jobs as of October 31, 2006, equaled 559, including 26 new jobs added, with 19 jobs lost.

Currently, Raytheon and Aerospace Systems & Technologies are working on SLN Aviation Service Center expansions—both will result in additional aviation employees, which will result in additional jobs in the Salina/Saline County area.

Targeted businesses include companies involved in very light jet production and assembly; business jet modification, repair and overhaul; turbine engine assembly, overhaul and repair; aircraft flight testing; paint and interior

*(Continued on page 6)*

## MAY 8 LUNCH & LEARN for MENTAL HEALTH MONTH

Stress and anxiety are mental health issues that affect our children, ourselves, our who. Specialists give their perspective on these mental health concerns and the services available in our community at Lunch & Learn, May 8, co-sponsored by the League of Women Voters and Central Kansas Mental Health Center (CKMHC). The event recognizes May as Mental Health Month.

The event will be held at the CKMHC auditorium on the second floor of the CKMHC building, 809 Elmhurst Blvd., located between Ohio and the YMCA.

Speakers include pediatrician Dr. Edgar Rosales on kids and stress and licensed social work Dan Gard on the symptoms of and treatment for anxiety and the services available at CKMHC.

## STATE CONVENTION, APRIL 28, WICHITA

League members from around the state gather for the biennial convention on Saturday, April 28, at Holiday Inn Select in Wichita. In addition to electing new officers and directors and approving a program of study for the next two years, Judy Duffy, the LWVUS Board liaison to Kansas Leagues, will present a Leadership Development workshop and join Wichita League members in a program on DC Voting Rights.

### Nominations for 2007-2009 Officers and Directors:

President: Diane Kuhn, Johnson County  
1<sup>st</sup> Vice Pres.: Sharon Ailsieger, Wichita  
Secretary: Betsy Rohleder, Topeka  
Directors: Kay Calvert, Emporia, Gwen Elliott, Topeka, Kay Hale, Lawrence  
Bob Kruh, Manhattan.

Nominating Committee: Janis McMillen, Chair, Johnson Co., Carrie Lindsey, Lawrence, Karen McCulloh, Manhattan  
Salina member Marge Mintun chaired the nominating committee along with committee members Cathy Hoy, Lee Rowe, Caleb Morse and Mary Lou Warren.

### Recommended Study for 2007-2009:

Water management, as related to power production and energy sources.

### Farewell from Janis McMillen Outgoing State President

As my two terms as State President come to a close, I want to take this opportunity to express my appreciation to all the State Board members who served with me.

Each year, I feel like I've had a great team to work with, and we have accomplished some very good things for our League. The support and enthusiasm of the local League residents have also contributed to my positive feelings about being your State President. Some of my most enjoyable times were those when I visited the Local Leagues, as each one is different and brings a new and interesting perspective to being a League member. I am very proud of the vital contributions that Leagues are making in their communities. You all are fantastic!

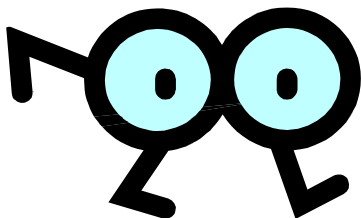
Finally, I have great confidence in the Officers and Directors who will be guiding the State League for the coming year. You are in great hands, and I wish all of you much enjoyment through your League experiences.

With respect and admiration for all of you,  
—Janis.

## OBSERVERS (cont.): Airport Authority

completion; avionics installation; and unmanned vehicle manufacturing/operation.

The service center will support a wide range of aviation and aerospace companies that will benefit from Salina's 12,300-foot primary runway. Current and new



businesses also benefit from the \$9.8 million in recent improvements at SLN Municipal Airport. The Federal Aviation Administration funded \$7.3 million in improvements since 2004 including the rehabilitation of two runways and lighting updates. General Obligation Bonds and local funds

were used to develop the parallel Runway 18/36.

To improve the SLN Aviation Service Center, SAA will need to increase its options for funding. The most promising prospects all require major new facility construction ranging in size from 50,000 to 250,000 sq.ft. A key to adding new aviation and aerospace jobs is our ability to quickly finance and build new buildings. It is not unreasonable that the SAA would need to be able to finance from \$5 million to \$20 million of the new facility construction.

To finance such a large sum, the general obligation bond capacity has been raised from 3% to 10%. This will increase the general obligation bond capability from about \$12 million to about \$40 million. It is important to note that the additional general obligation bond financing for the new SLN Aviation Services Center buildings

and improvements would be paid off by the lease revenue and not tax dollars. The Salina Airport Authority's long-term plan is for its mill levy to remain under 3 mills.

### FACTS:

- SLN & Industrial Center employees: over 4,000
- Payroll: \$138 million
- SAA Acres: 2,860
- Manufacturing, warehouse, office space: 900,000sq.ft.
- Aircraft operations per year: 90,000
- Business jets: 7,000
- Military aircraft: 3,000
- Fuel: 4 million gallons
- Fuel flowage fee: 6.37¢/gal.(6¢ is national average)
- Income generated from flowage fee: \$250,000
- SAA Assets: \$37 million
- Annual Revenue: \$2 million

## WRITING SUCCESSFUL OP/EDS

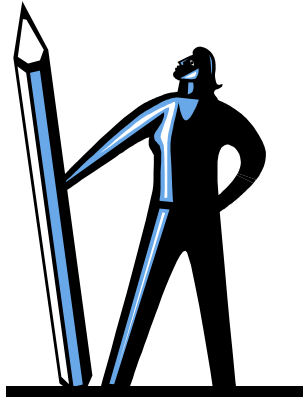
**Op/Eds are short essays that appear next to the editorial pages of newspapers. They are a fantastic tool for Leagues working to influence local or regional policies, to bring a new perspective to an issue, or to react to developments in their communities.**

Here are a few tips for writing successful Op/Eds, thanks to PNN Online, a leading nonprofit newsletter:

- Introduce yourself to your newspaper's op-ed page editor by telephone or e-mail and request the publication's op-ed guidelines. Then follow them.
- Determine your goal. What do you want to achieve through your op-ed? Do you want people to behave differently or take a specific action? Keep

this goal in mind as you write.

- Select one message to communicate. Op-eds are short - typically around 800 words - so you have room to make just one good point.
- Be controversial. Editors like essays with strong opinions that will spark conversation.



- Illustrate how the topic or issue affects readers. Put a face on the issue by starting your essay with the story of somebody who has been affected or begin with an attention-getting statistic.
- Describe the problem and why it exists. This is often where you can address the opposing viewpoint and explain your group's perspective.
- Offer your solution to the problem and explain why it's the best option.
- Conclude on a strong note by repeating your message or stating a call to action.
- Add one or two sentences at the end that describe your name, title, and credentials as they relate to the topic. *(This article is from the League of Women Voters U.S. website)*

## CITY ENDORSES CONSOLIDATION STUDY

### County unlikely to participate

Twice in the past month, League members have attended governmental meetings on the topic of studying consolidation.

The League's new position on city-county consolidation, adopted at last year's annual meeting, continues to make waves among local officials. The position is *not* a recommendation of consolidation. It does ask that the city and county *study* the topic of consolidation, so citizens can find out what the pros and cons of such a move might be. Specifically, it calls for a joint city-county task force to study consolidation, a task force made up of both rural and urban residents, as well as a representative sampling of citizens from across the cultural, economic, and occupational spectrums.

The March 29 joint city and county commission meeting was a dismayingly rancorous event, with both city and county commissioners taking potshots

at each other on all manner of topics.

The League's presentation was late in the meeting. Study committee member Ann Zimmerman briefly described the League's tradition of studies to arrive at reasoned positions on governmental issues. She summarized the process, thoughts and inquiries behind the League's resulting position. The commissioners had the printed position before them.

City commissioners spoke supportively of the joint task force idea. The county commissioners were markedly less supportive. New county commissioner Randy Duncan was gracious in his disagreement but felt that he had been elected on a mandate to avoid any discussion of consolidation, and that county government was personal and close to the people, unlike it might be if consolidation were implemented. Sherri Barragree left the meeting during the presentation without explanation.

Craig Stephenson had expressed his distaste for the task force idea several times in the past.

The second meeting was the April 9 city commission meeting at which the League's joint task force recommendation was passed by the city commission, accompanied by kind words from city manager Jason Gage.

The city recognized, as a part of its passage of the recommendation, that there can be no "joint" task force without county participation.

The League also acknowledges that reality. It would do the city little good to study the values of consolidation, whether that be functional consolidation or full governmental consolidation, if the county is not willing to take part. We will be asking ourselves what steps to take next to ensure fair and efficient local government.

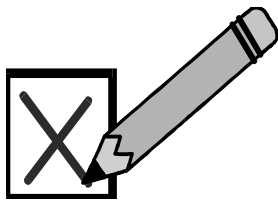
**League of Women Voters of Salina**

PO Box 502

Salina, KS 67402-0502

www.lwvofsalinaks.com

**JOIN US**



**JOIN IN THE ACTION:** Become a member of the League of Women Voters of Salina or renew your League Membership. Today is the right time for you to join the League. Please take a moment now to become a member.

\_\_\_\_\_ **Yes, I want to add my voice to yours by joining the League at the following level:**

- \_\_\_\_\_ Single Membership (circle one)
  - Contributing Level*      \$55.00
  - Sustaining Level*      \$45.00
- \_\_\_\_\_ Family Membership (circle one)
  - Contributing Level*      \$80.00
  - Sustaining Level*      \$65.00
- \_\_\_\_\_ Student/supported or other      \$20.00

\_\_\_\_\_ **I am unable to join the League at this time, but enclosed is my contribution of \$\_\_\_\_\_.**

For more information, please contact:

**Mary Anne Powell, Membership Chairperson**  
1022 Funston, Salina, Kansas 67401  
Telephone: 823-8041 Email: wbpowell@ksu.edu

*Make checks payable to: **The League of Women Voters of Salina**, and mail to **PO Box 502, Salina, KS 67402-0502.***